

# How to use the NiTi Brush for peri-implantitis.

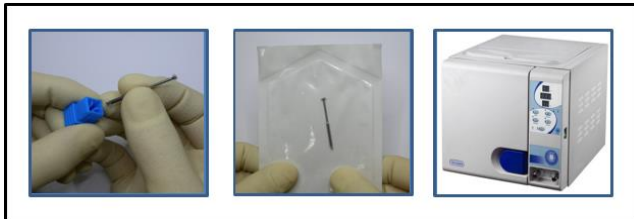
Presented by HANS Korea Co., Ltd. [www.NiTiBrush.com](http://www.NiTiBrush.com) [info@nitibrush.com](mailto:info@nitibrush.com)

1. Check up the periimplantitis.



Check up the periimplantitis using probe and possible any solution.

2. Sterile the NiTi Brush.



Before use, sterile the NiTi Brush using sterile pouch & **autoclave**  
**134 °C / 15 minutes**

3. Attach the NiTi Brush to implant handpiece



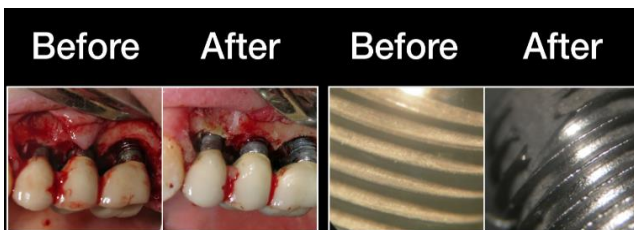
Attach the NiTi Brush to (20:1) **implant handpiece**  
Prepare external saline irrigation

4. Brushing – mechanical treatment.



**implant motor, RPM 600~1,200**  
Rotate the NiTi Brush  
Remove osseous defect of plaque  
calculus or any other materials  
Extensive external **sterile saline**

5. Check up the mechanical debridement by naked eyes.



During brushing,  
The shade of implant surface changes into **shiny & machined surface**